

PART SW 1/4 SEC 18. T5N. R2W. S.L.B. & M.
SPRING MEADOWS NO. 2

294

WEBER COUNTY, UTAH

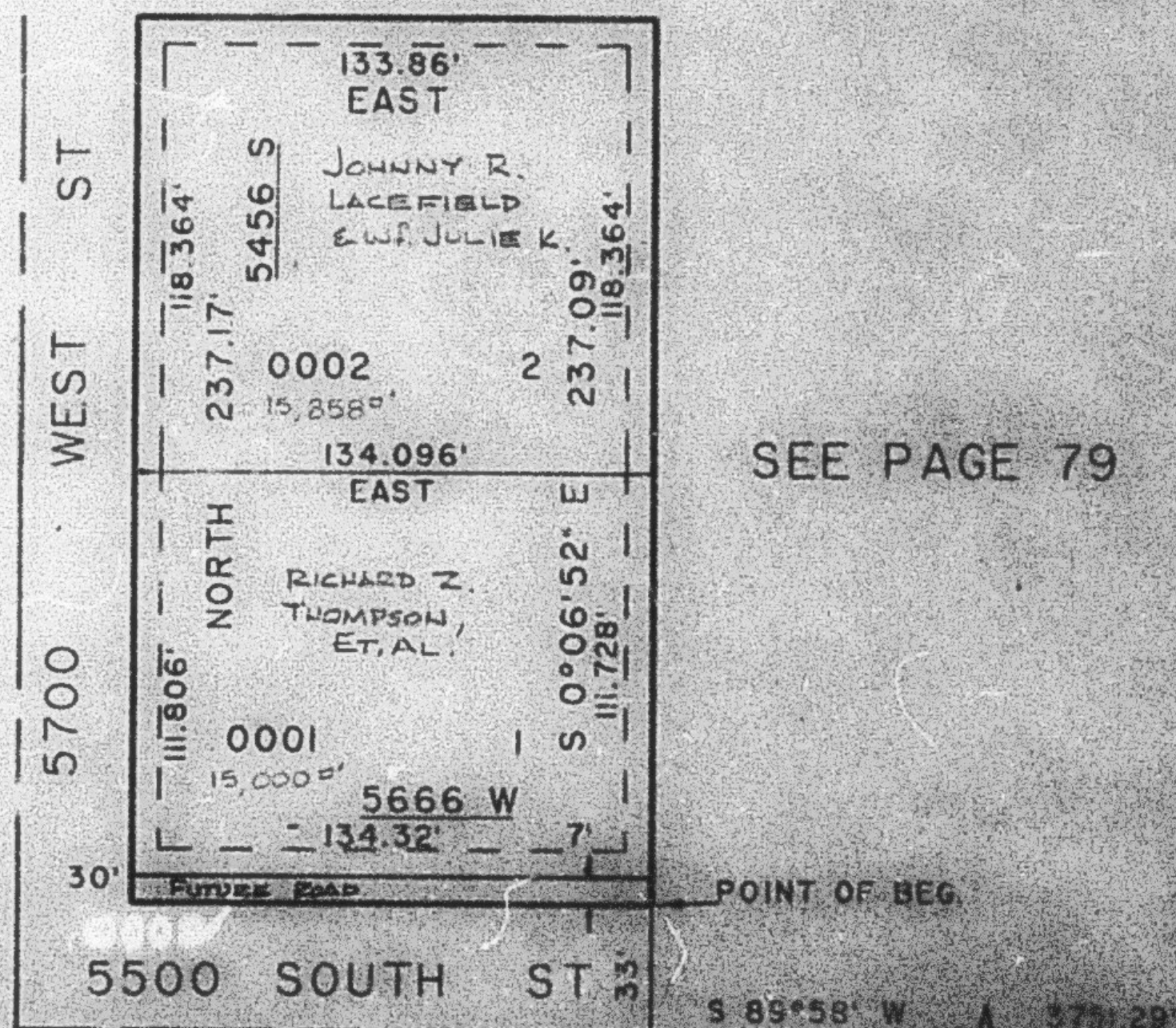
TAXING UNIT: 31

SCALE 1" TO 50'

PREFIX: 05-074

SEE PAGE 216

SEE PAGE 79



SEE PAGE 79

7' UTILITY AND DRAINAGE EASEMENTS
EACH SIDE OF PROPERTY LINE AS
INDICATED BY DASHED LINES
EXCEPT AS OTHERWISE SHOWN

FOR COMPLETE ENG. DATA
SEE ORIG. DEDICATED PLAT
IN BOOK 27, PAGE 95.

SEE PAGE 216
T5N. R2W. S.L.B. & M.